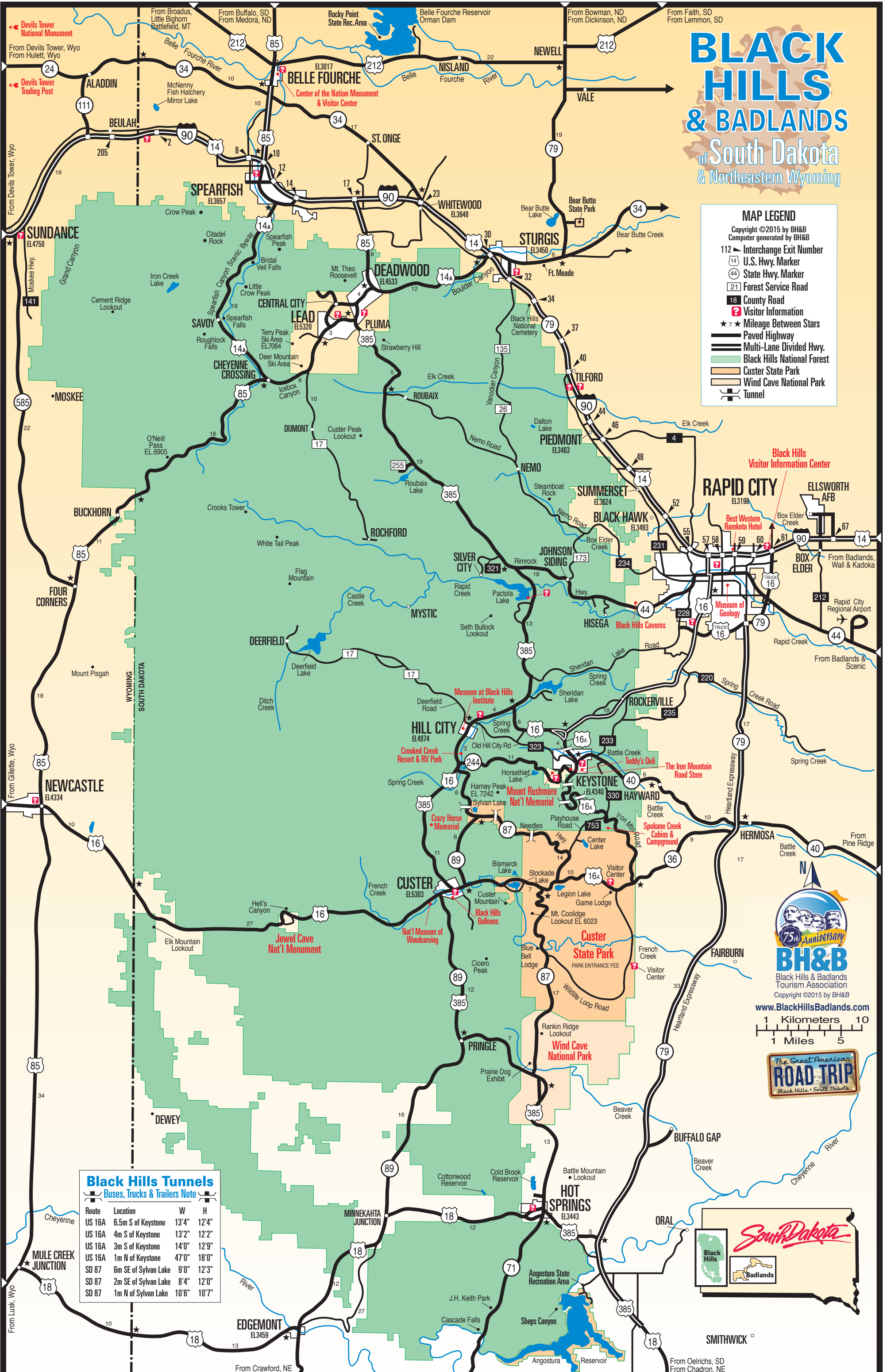


BLACK HILLS & BADLANDS

of South Dakota & Northeastern Wyoming

MAP LEGEND
 Copyright ©2015 by BH&B
 Computer generated by BH&B

- 112 Interchange Exit Number
- 14 U.S. Hwy. Marker
- 44 State Hwy. Marker
- 21 Forest Service Road
- 18 County Road
- Visitor Information
- ★ Mileage Between Stars
- Paved Highway
- Multi-Lane Divided Hwy.
- Black Hills National Forest
- Custer State Park
- Wind Cave National Park
- Tunnel



Black Hills Visitor Information Center

RAPID CITY EL3198

Best Western Ramkota Hotel

Box Elder Creek

Box Elder

Rapid City Regional Airport

From Badlands, Wall & Kadoka

From Badlands & Scenic

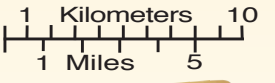
From Pine Ridge

From Gillette, Wyo

From Lusk, Wyo

From Oelrichs, SD

From Chadron, NE



Black Hills Tunnels
 Buses, Trucks & Trailers Note

Route	Location	W	H
US 16A	6.5m S of Keystone	13'4"	12'4"
US 16A	4m S of Keystone	13'2"	12'2"
US 16A	3m S of Keystone	14'0"	12'9"
US 16A	1m N of Keystone	47'0"	18'0"
SD 87	6m SE of Sylvan Lake	9'0"	12'3"
SD 87	2m SE of Sylvan Lake	8'4"	12'0"
SD 87	1m N of Sylvan Lake	10'6"	10'7"

